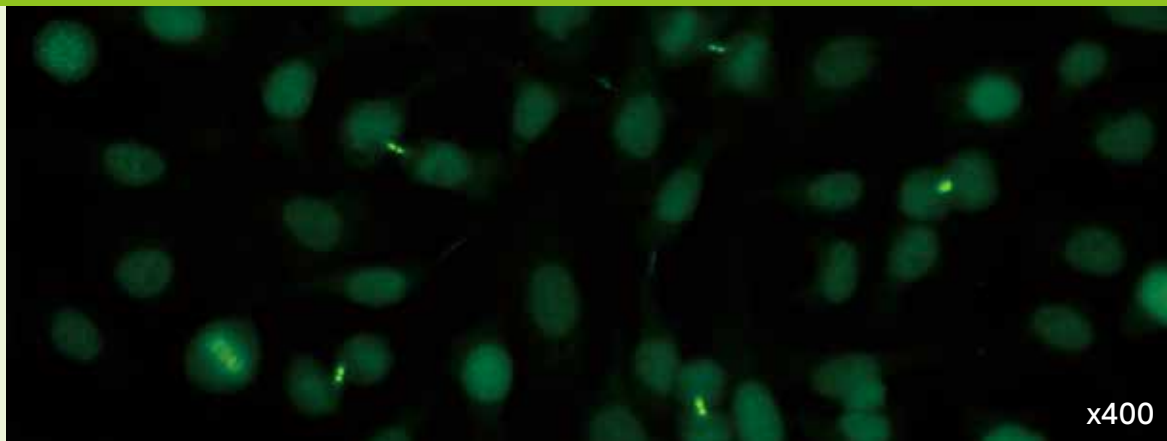
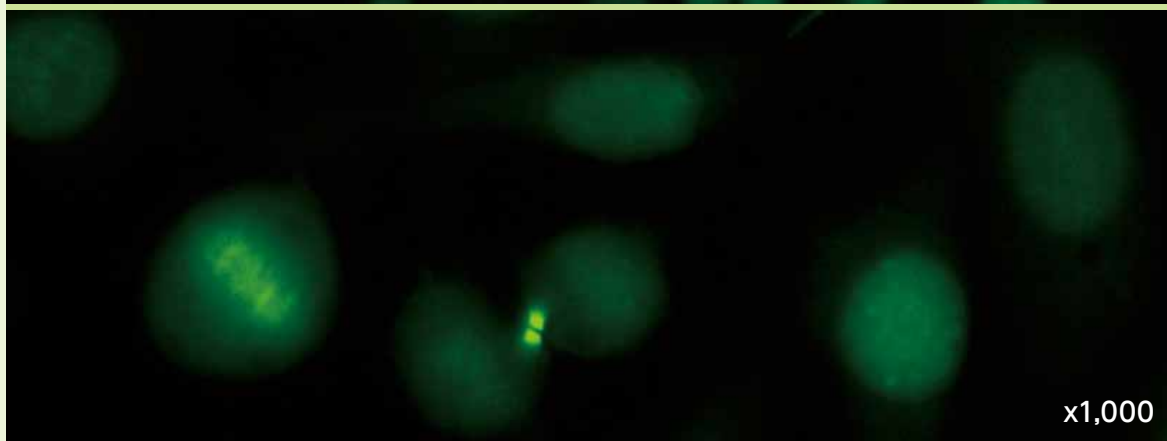


AC-27: Intercellular bridge型



x400



x1,000

間期 S期およびG2期細胞の核に染色を示す場合がある

核小体 陰性

分裂期 分裂終期の分裂溝および分裂直後の娘細胞間の架橋部 (midbody) に染色を示す

旧名: Midbody型

関連抗原

CENP-E、CENP-F、TD60、MSA36、KIF-14、MKLP-1、MPP1/KIF20B、INCENP

メモ

AC-27型はいかなる疾患に対しても陽性的中率は低い[2]。ルーチンの血清学的検査において極めて稀に見られる[8]。AC-27型はSSc、レイノー現象、悪性腫瘍の患者で報告されている[1, 4, 8]。

CENP-E、CENP-F、TD60、MSA36、KIF-14、MKLP-1に対する自己抗体は限局皮膚硬化型またはびまん皮膚硬化型SSc、SLE、悪性腫瘍の患者で報告がある[2]。

INCENPに対する自己抗体はGraham-Little-Piccardi-Lasseur症候群の1例で報告されている[5]。

MPP1/KIF20B (M期リン酸化タンパク質1) に対する自己抗体は、特発性運動失調症、他の神経性症候群、発作性夜間ヘモグロビン尿症で認められる[3, 6]。

参考文献

1. Fritzler MJ, Ayer LM, Gohill J, O'Connor C, Laxer RM, Humbel RL. An antigen in metaphase chromatin and the midbody of mammalian cells binds to scleroderma sera. *J Rheumatol.* 1987;14(2):291-4.
2. Rattner JB, Mack GJ, Fritzler MJ. Autoantibodies to components of the mitotic apparatus. *Mol Biol Rep.* 1998;25(3):143-55.
3. Fritzler MJ, Kerfoot SM, Feasby TE, Zochodne DW, Westendorf JM, Dalmau JO, et al. Autoantibodies from patients with idiopathic ataxia bind to M-phase phosphoprotein-1 (MPP1). *J Investig Med.* 2000;48(1):28-39.
4. Tausche AK, Conrad K, Seidel W, Roch B. Anti-midbody antibodies as a possible predictive factor for a special limited or abortive form of systemic sclerosis? *Ann Rheum Dis.* 2005;64(8):1237-8.
5. Rodriguez-Bayona B, Ruchaud S, Rodriguez C, Linares M, Astola A, Ortiz M, et al. Autoantibodies against the chromosomal passenger protein INCENP found in a patient with Graham Little-Piccardi-Lasseur syndrome. *J Autoimmune Dis.* 2007;4:1.
6. Alahmad A, Preuss KD, Schenk J, Fureder W, Schrezenmeier H, Muller-Lantzsch N, et al. Desmoplakin and KIF20B as target antigens in patients with paroxysmal nocturnal haemoglobinuria. *Br J Haematol.* 2010;151(3):273-80.
7. Hu CK, Coughlin M, Mitchison TJ. Midbody assembly and its regulation during cytokinesis. *Mol Biol Cell.* 2012;23(6):1024-34.
8. Vermeersch P, Bossuyt X. Prevalence and clinical significance of rare antinuclear antibody patterns. *Autoimmun Rev.* 2013;12(10):998-1003.
9. Chan EK, Damoiseaux J, Carballo OG, Conrad K, de Melo Cruvinel W, Francescantonio PL, et al. Report of the First International Consensus on Standardized Nomenclature of Antinuclear Antibody HEp-2 Cell Patterns 2014-2015. *Front Immunol.* 2015;6:412.
10. Damoiseaux J, Andrade LEC, Carballo OG, Conrad K, Francescantonio PLC, Fritzler MJ, et al. Clinical relevance of HEp-2 indirect immunofluorescent patterns: the International Consensus on ANA patterns (ICAP) perspective. *Ann Rheum Dis.* 2019;78(7):879-89.