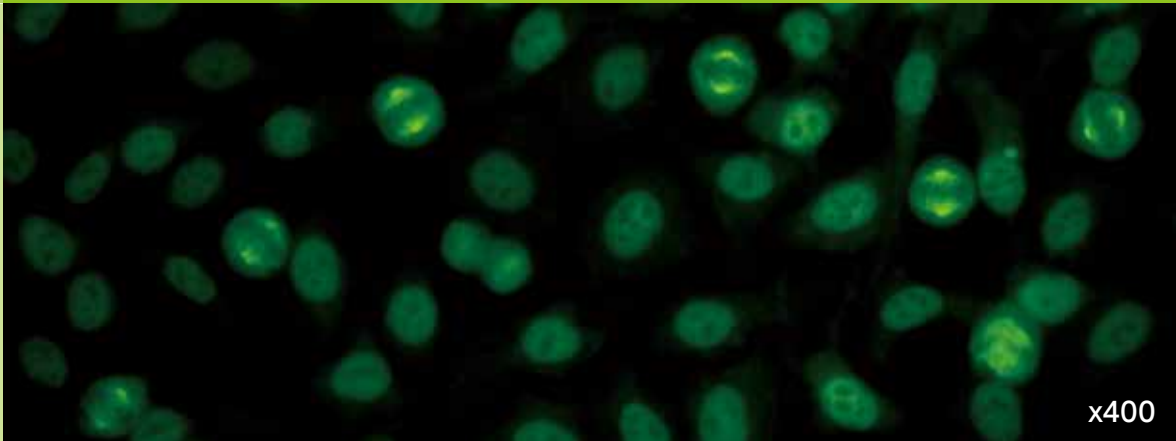


AC-26: NuMA-like型



間期 斑紋型に染色される
核小体 陰性
分裂期 分裂期細胞の紡錘体極と紡錘糸が染色される

旧名: NuMA-1型/MSA-1型

疑われる疾患

- 膠原病
- 臓器特異的自己免疫疾患

関連抗原

NuMA、centrophilin、SP-H抗原、NMP-22

メモ

AC-26型を示す患者の約半数はSS、SLE、UCTD、限局皮膚硬化型SSc、RAなどの膠原病の臨床的な特徴を持つ。臓器特異的自己免疫疾患や、抗体価が低い場合は自己免疫疾患以外で稀に認めることがある[1, 5, 6, 7, 8]。ルーチンの血清学的検査において極めて稀に見られる[7]。

参考文献

1. Price CM, McCarty GA, Pettijohn DE. NuMA protein is a human autoantigen. *Arthritis Rheum.* 1984;27(7):774-9.
2. Compton DA, Szilak I, Cleveland DW. Primary structure of NuMA, an intranuclear protein that defines a novel pathway for segregation of proteins at mitosis. *J Cell Biol.* 1992;116(6):1395-408.
3. Andrade LE, Chan EK, Peebles CL, Tan EM. Two major autoantigen-antibody systems of the mitotic spindle apparatus. *Arthritis Rheum.* 1996;39(10):1643-53.

4. Whitehead CM, Winkfein RJ, Fritzler MJ, Rattner JB. The spindle kinesin-like protein HsEg5 is an autoantigen in systemic lupus erythematosus. *Arthritis Rheum.* 1996;39(10):1635-42.
5. Grypiotis P, Ruffatti A, Tonello M, Winzler C, Radu C, Zampieri S, et al. [Clinical significance of fluoroscopic patterns specific for the mitotic spindle in patients with rheumatic diseases]. *Reumatismo.* 2002;54(3):232-7.
6. Bonaci-Nikolic B, Andrejevic S, Bukilica M, Urošević I, Nikolic M. Autoantibodies to mitotic apparatus: association with other autoantibodies and their clinical significance. *J Clin Immunol.* 2006;26(5):438-46.
7. Mozo L, Gutierrez C, Gomez J. Antibodies to mitotic spindle apparatus: clinical significance of NuMA and HsEg5 autoantibodies. *J Clin Immunol.* 2008;28(4):285-90.
8. Szalat R, Ghillani-Dalbin P, Jallouli M, Amoura Z, Musset L, Cacoub P, et al. Anti-NuMA1 and anti-NuMA2 (anti-HsEg5) antibodies: Clinical and immunological features: A propos of 40 new cases and review of the literature. *Autoimmun Rev.* 2010;9(10):652-6.
9. Chan EK, Damoiseaux J, Carballo OG, Conrad K, de Melo Cruvinel W, Francescantonio PL, et al. Report of the First International Consensus on Standardized Nomenclature of Antinuclear Antibody HEp-2 Cell Patterns 2014-2015. *Front Immunol.* 2015;6:412.
10. Damoiseaux J, Andrade LEC, Carballo OG, Conrad K, Francescantonio PLC, Fritzler MJ, et al. Clinical relevance of HEp-2 indirect immunofluorescent patterns: the International Consensus on ANA patterns (ICAP) perspective. *Ann Rheum Dis.* 2019;78(7):879-89.