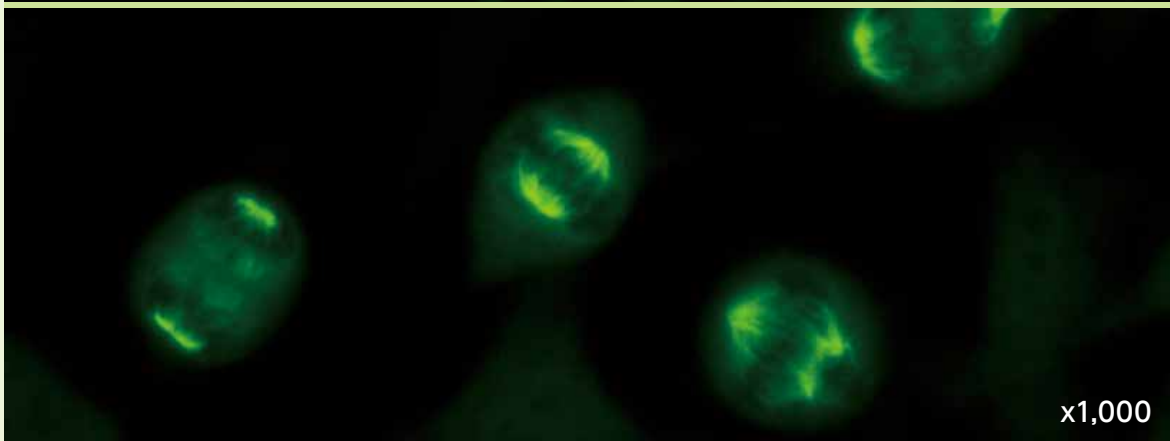
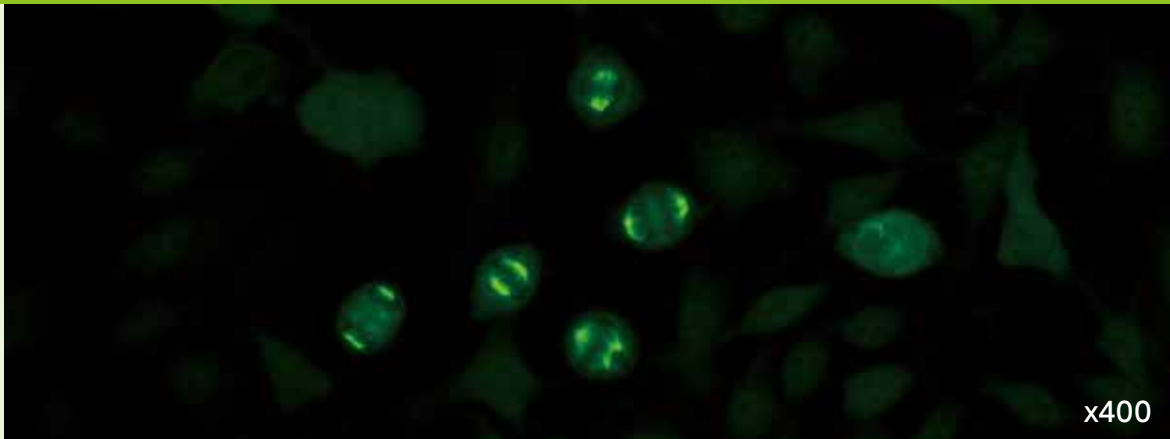


AC-25: Spindle fibers型 (紡錘糸型)



間期 陰性
核小体 陰性
分裂期 分裂期細胞の紡錘体極と紡錘糸が染色される

旧名: NuMA-2型 / MSA-2型

関連抗原

Kinesin-like protein HsEg5

メモ

AC-25型はいかなる疾患に対しても陽性的中率は低い。ルーチンの血清学的検査において極めて稀に見られる[3]。AC-25型は特定の自己免疫疾患と関連しないが、HsEg5に対する反応性はSSとSLEでより一般的に認められる[2, 4]。

参考文献

1. Andrade LE, Chan EK, Peebles CL, Tan EM. Two major autoantigen-antibody systems of the mitotic spindle apparatus. *Arthritis Rheum.* 1996;39(10):1643-53.
2. Whitehead CM, Winkfein RJ, Fritzier MJ, Rattner JB. The spindle kinesin-like protein HsEg5 is an autoantigen in systemic lupus erythematosus. *Arthritis Rheum.* 1996;39(10):1635-42.
3. Mozo L, Gutierrez C, Gomez J. Antibodies to mitotic spindle apparatus: clinical significance of NuMA and HsEg5 autoantibodies. *J Clin Immunol.* 2008;28(4):285-90.
4. Szalat R, Ghillani-Dalbin P, Jallouli M, Amoura Z, Musset L, Cacoub P, et al. Anti-NuMA1 and anti-NuMA2 (anti-HsEg5) antibodies: Clinical and immunological features: A propos of 40 new cases and review of the literature. *Autoimmun Rev.* 2010;9(10):652-6.
5. Chan EK, Damoiseaux J, Carballo OG, Conrad K, de Melo Cruvinel W, Francescantonio PL, et al. Report of the First International Consensus on Standardized Nomenclature of Antinuclear Antibody HEp-2 Cell Patterns 2014-2015. *Front Immunol.* 2015;6:412.
6. Damoiseaux J, Andrade LEC, Carballo OG, Conrad K, Francescantonio PLC, Fritzier MJ, et al. Clinical relevance of HEp-2 indirect immunofluorescent patterns: the International Consensus on ANA patterns (ICAP) perspective. *Ann Rheum Dis.* 2019;78(7):879-89.