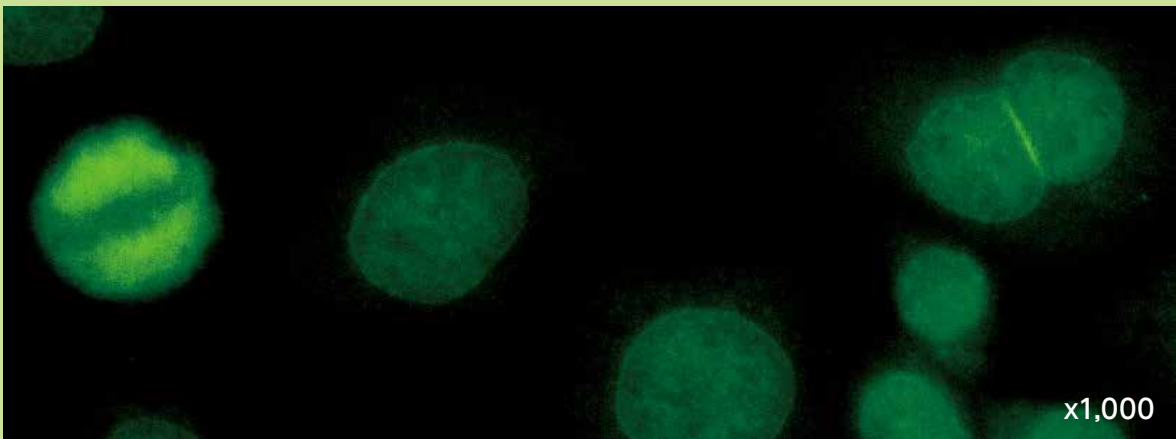
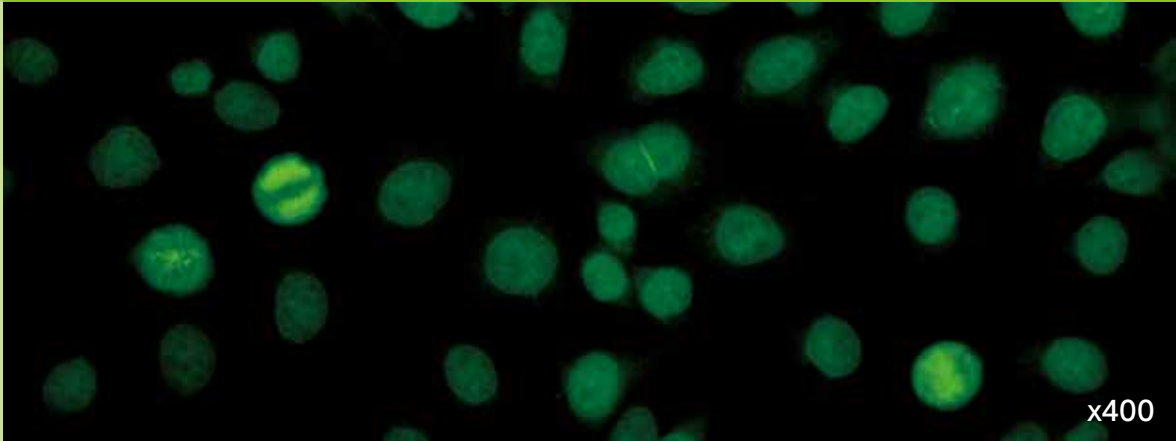


## AC-11: Smooth nuclear envelope型 (Nuclear envelope/核膜型)



**間期** 核周囲に輪郭上の染色を認め、周辺部以外は均質に染色される  
**核小体** 陰性  
**分裂期** 分裂中期および後期クロマチンは染色されない

### 疑われる疾患

- 自己免疫性血球減少症
- 自己免疫性肝疾患
- 線状強皮症
- 抗リン脂質抗体症候群
- 膠原病

### 関連抗原

Lamin A/B/C、Lamin関連タンパク質 (LAP-2)

### メモ

ルーチンの自己抗体検査において稀に見られる [1, 2, 5]。

### 参考文献

1. Reeves WH, Chaudhary N, Salerno A, Blobel G. Lamin B autoantibodies in sera of certain patients with systemic lupus erythematosus. *J Exp Med*. 1987;165(3):750-62.
2. Konstantinov K, Foisner R, Byrd D, Liu FT, Tsai WM, Wiik A, et al. Integral membrane proteins associated with the nuclear lamina are novel autoimmune antigens of the nuclear envelope. *Clin Immunol Immunopathol*. 1995;74(1):89-99.
3. 相澤 良夫, 戸田 剛太郎. 原発性胆汁性肝硬変(PBC)に出現する抗核抗体(ANA)の多様性とその臨床的意義. *医学のあゆみ*. 1995;172(7):423-6.
4. von Mikecz A, Konstantinov K, Buchwald DS, Gerace L, Tan EM. High frequency of autoantibodies to insoluble cellular antigens in patients with chronic fatigue syndrome. *Arthritis Rheum*. 1997;40(2):295-305.
5. Coppo P, Clauvel JP, Bengoufa D, Fuentes V, Gouilleux-Gruart V, Courvalin JC, et al. Autoimmune cytopenias associated with autoantibodies to nuclear envelope polypeptides. *Am J Hematol*. 2004;77(3):241-9.
6. Chan EK, Damoiseaux J, Carballo OG, Conrad K, de Melo Cruvinel W, Francescantonio PL, et al. Report of the First International Consensus on Standardized Nomenclature of Antinuclear Antibody HEp-2 Cell Patterns 2014-2015. *Front Immunol*. 2015;6:412.
7. Damoiseaux J, Andrade LEC, Carballo OG, Conrad K, Francescantonio PLC, Fritzler MJ, et al. Clinical relevance of HEp-2 indirect immunofluorescent patterns: the International Consensus on ANA patterns (ICAP) perspective. *Ann Rheum Dis*. 2019;78(7):879-89.