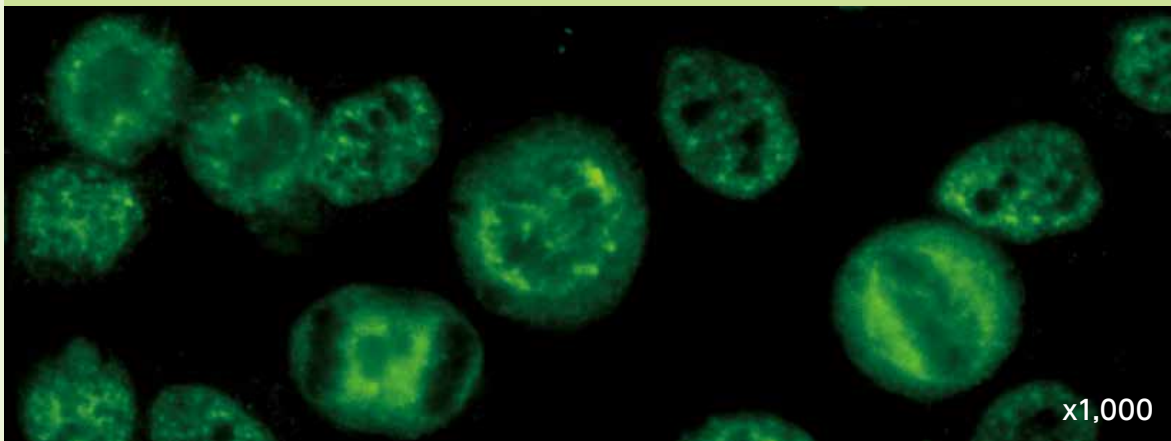
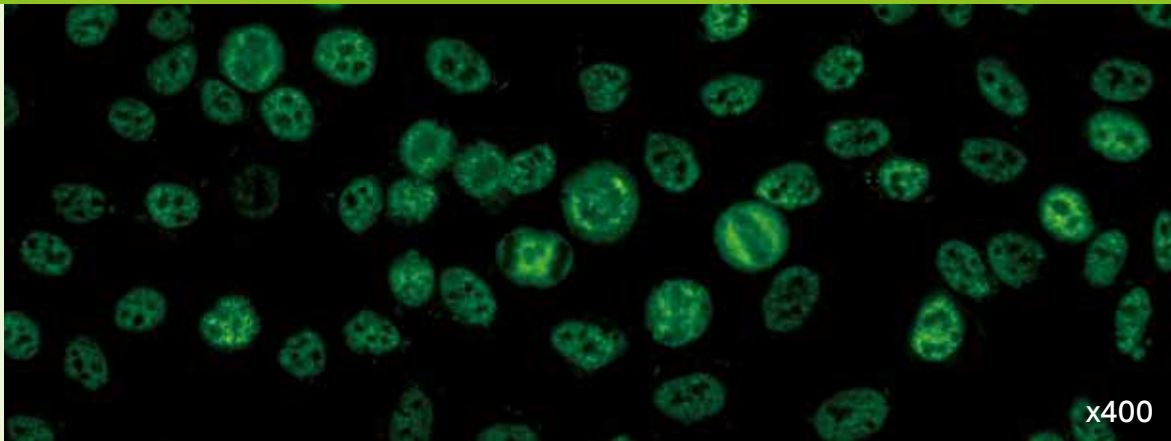


AC-5: Nuclear large/coarse speckled型 (Speckled/斑紋型)



- 間期** 間期核全体に粗い斑点 (coarse speckles) が見られる
核小体 核小体の染色は一定ではなく、陽性または陰性である
分裂期 分裂期クロマチンは陰性

疑われる疾患

- SLE
- SSc
- MCTD
- SSc-筋炎オーバーラップ症候群
- UCTD

推奨フォローアップ検査

SLE疑い例

- 抗Sm抗体
- 抗U1RNP抗体

SSc疑い例

- 抗RNAポリメラーゼ III抗体

MCTD疑い例

- 抗U1RNP抗体

SSc-筋炎オーバーラップ症候群疑い例

- 抗U1RNP抗体
- 抗Ku抗体

関連抗原

hnRNP、U1RNP、Sm、RNAポリメラーゼ III

メモ

一般集団の非膠原病集団内で、AC-5型の存在は推奨フォローアップ検査に示した自己抗原とは関連せず、通常は低力価を示す。

AC-5型を呈する抗体は時折、U1RNP以外のRNP、例えばU2RNP (SSc-筋炎オーバーラップ症候群と関連) またはU11/U12RNP (SScと関連) と反応する。これらの自己抗体は免疫沈降法で検出できる[4, 6]。

MBL 関連製品

ELISA法 MESACUP™ anti-RNA ポリメラーゼ III テスト

CLEIA法 ステイシア MEBLux™テスト Sm
ステイシア MEBLux™テスト RNP

参考文献

1. Northway J, Tan E. Differentiation of antinuclear antibodies giving speckled staining patterns in immunofluorescence. *Clinical Immunology and Immunopathology*. 1972;1(1):140-54.
2. Sharp GC, Irvin WS, Tan EM, Gould RG, Holman HR. Mixed connective tissue disease--an apparently distinct rheumatic disease syndrome associated with a specific antibody to an extractable nuclear antigen (ENA). *Am J Med*. 1972;52(2):148-59.
3. Fritzler MJ, Ali R, Tan EM. Antibodies from patients with mixed connective tissue disease react with heterogeneous nuclear ribonucleoprotein or ribonucleic acid (hnRNP/RNA) of the nuclear matrix. *J Immunol*. 1984;132(3):1216-22.
4. Mimori T, Hinterberger M, Pettersson I, Steitz JA. Autoantibodies to the U2 small nuclear ribonucleoprotein in a patient with scleroderma-polymyositis overlap syndrome. *J Biol Chem*. 1984;259(1):560-5.
5. Steiner G, Skriner K, Smolen JS. Autoantibodies to the A/B proteins of the heterogeneous nuclear ribonucleoprotein complex: novel tools for the diagnosis of rheumatic diseases. *Int Arch Allergy Immunol*. 1996;111(4):314-9.
6. Fertig N, Domsic RT, Rodriguez-Reyna T, Kuwana M, Lucas M, Medsger TA, Jr., et al. Anti-U11/U12 RNP antibodies in systemic sclerosis: a new serologic marker associated with pulmonary fibrosis. *Arthritis Rheum*. 2009;61(7):958-65.
7. Satoh M, Vazquez-Del Mercado M, Chan EK. Clinical interpretation of antinuclear antibody tests in systemic rheumatic diseases. *Mod Rheumatol*. 2009;19(3):219-28.
8. Petri M, Orbai AM, Alarcon GS, Gordon C, Merrill JT, Fortin PR, et al. Derivation and validation of the Systemic Lupus International Collaborating Clinics classification criteria for systemic lupus erythematosus. *Arthritis Rheum*. 2012;64(8):2677-86.
9. van den Hoogen F, Khanna D, Fransen J, Johnson SR, Baron M, Tyndall A, et al. 2013 classification criteria for systemic sclerosis: an American college of rheumatology/European league against rheumatism collaborative initiative. *Ann Rheum Dis*. 2013;72(11):1747-55.
10. Chan EK, Damoiseaux J, Carballo OG, Conrad K, de Melo Cruvinel W, Francescantonio PL, et al. Report of the First International Consensus on Standardized Nomenclature of Antinuclear Antibody HEp-2 Cell Patterns 2014-2015. *Front Immunol*. 2015;6:412.
11. Betteridge Z, McHugh N. Myositis-specific autoantibodies: an important tool to support diagnosis of myositis. *J Intern Med*. 2016;280(1):8-23.
12. Satoh M, Tanaka S, Ceribelli A, Calise SJ, Chan EK. A Comprehensive Overview on Myositis-Specific Antibodies: New and Old Biomarkers in Idiopathic Inflammatory Myopathy. *Clin Rev Allergy Immunol*. 2017;52(1):1-19.
13. Damoiseaux J, Andrade LEC, Carballo OG, Conrad K, Francescantonio PLC, Fritzler MJ, et al. Clinical relevance of HEp-2 indirect immunofluorescent patterns: the International Consensus on ANA patterns (ICAP) perspective. *Ann Rheum Dis*. 2019;78(7):879-89.