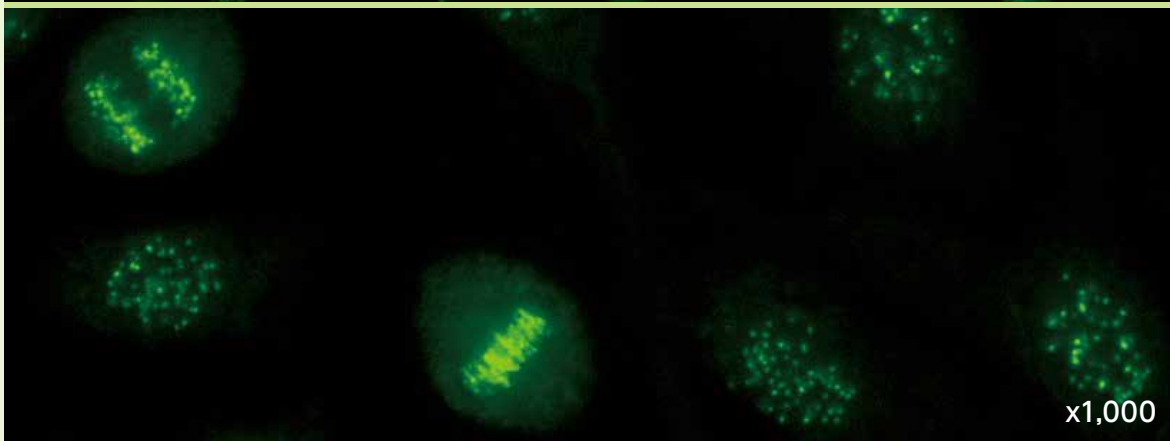
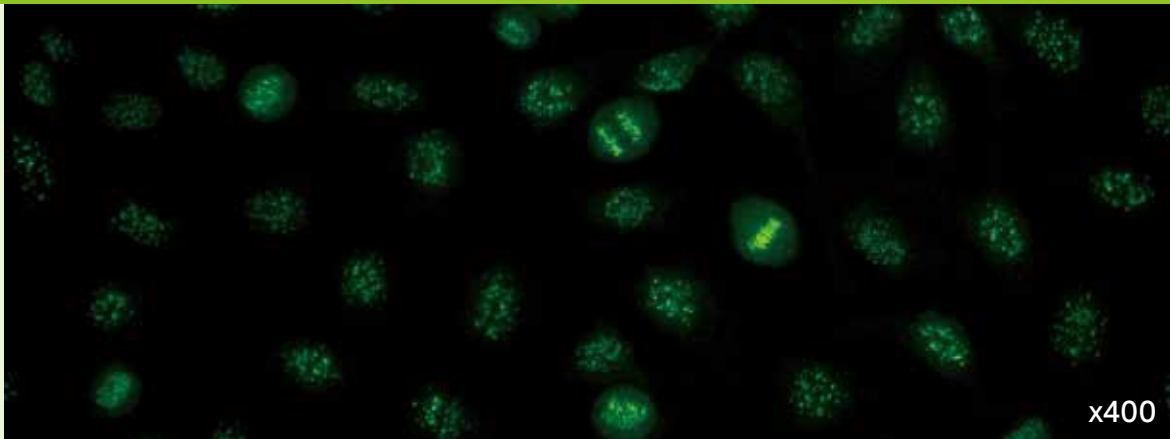


AC-3: Centromere型 (セントロメア型)



間期 間期核は40～80個の散在した荒い斑点状に染色される
核小体 陰性
分裂期 分裂期クロマチンも散在した荒い斑点状に染色される

旧名: Discrete speckled型 (散在斑紋型)

疑われる疾患

- 限局皮膚硬化型SSc ● PBC

推奨フォローアップ検査

- 抗CENP-B抗体

関連抗原

CENP-A/B (C)

メモ

AC-3型は抗CENP-B抗体と強く関連する。HEp-2 IIF検査が低力価の場合、抗CENP-B抗体の固相免疫測定法が推奨される[3]。

AC-3型を呈するPBC患者は多くの場合、SScを併発する[3]。AC-3型はSS患者のサブセットで報告される。これらの患者は軽いSSの特徴を示すが、より重度の外分泌腺機能不全やリンパ腫の高リスクなどの末期SSの臨床症状を有することもある[7, 11, 14, 15]。

AC-3型はSLE患者のサブセットでも報告される。これらの患者はしばしばある程度のSScとのオーバーラップを有する[1]。AC-3型を呈する大抵の血清はCENP-AおよびCENP-Bに反応する[8, 16]。

AC-3型陽性の稀なケースでは、SSc患者のCENP-B陰性血清が抗CENP-A抗体強陽性となる場合がある[2, 9]。CENP-Cに対する自己抗体はSScおよびSSの患者で報告される[4, 5]。

MBL 関連製品

CLEIA法 ステイシア MEBLux™テスト CENP-B

参考文献

1. Nakano M, Ohuchi Y, Hasegawa H, Kuroda T, Ito S, Gejyo F. Clinical significance of anticentromere antibodies in patients with systemic lupus erythematosus. *J Rheumatol.* 2000;27(6):1403-7.
2. Russo K, Hoch S, Dima C, Varga J, Teodorescu M. Circulating anticentromere CENP-A and CENP-B antibodies in patients with diffuse and limited systemic sclerosis, systemic lupus erythematosus, and rheumatoid arthritis. *J Rheumatol.* 2000;27(1):142-8.
3. Conrad K, Schöbler W, Hiepe F, Fritzler MJ. Autoantibodies in systemic autoimmune diseases: a diagnostic reference: Pabst Science Publishers; 2002.
4. Pillemer SR, Casciola-Rosen L, Baum BJ, Rosen A, Gelber AC. Centromere protein C is a target of autoantibodies in Sjogren's syndrome and is uniformly associated with antibodies to Ro and La. *J Rheumatol.* 2004;31(6):1121-5.
5. Gelber AC, Pillemer SR, Baum BJ, Wigley FM, Hummers LK, Morris S, et al. Distinct recognition of antibodies to centromere proteins in primary Sjogren's syndrome compared with limited scleroderma. *Ann Rheum Dis.* 2006;65(8):1028-32.
6. Invernizzi P, Lleo A, Podda M. Interpreting serological tests in diagnosing autoimmune liver diseases. *Semin Liver Dis.* 2007;27(2):161-72.

7. Bournia VK, Diamanti KD, Vlachoyiannopoulos PG, Moutsopoulos HM. Anticentromere antibody positive Sjogren's Syndrome: a retrospective descriptive analysis. *Arthritis Res Ther.* 2010;12(2):R47.
8. Mahler M, Maes L, Blockmans D, Westhovens R, Bossuyt X, Riemekasten G, et al. Clinical and serological evaluation of a novel CENP-A peptide based ELISA. *Arthritis Res Ther.* 2010;12(3):R99.
9. Hudson M, Mahler M, Pope J, You D, Tatibouet S, Steele R, et al. Clinical correlates of CENP-A and CENP-B antibodies in a large cohort of patients with systemic sclerosis. *J Rheumatol.* 2012;39(4):787-94.
10. Johnson SR, Fransen J, Khanna D, Baron M, van den Hoogen F, Medsger TA, Jr., et al. Validation of potential classification criteria for systemic sclerosis. *Arthritis Care Res (Hoboken).* 2012;64(3):358-67.
11. Baldini C, Mosca M, Della Rossa A, Pepe P, Notarstefano C, Ferro F, et al. Overlap of ACA-positive systemic sclerosis and Sjogren's syndrome: a distinct clinical entity with mild organ involvement but at high risk of lymphoma. *Clin Exp Rheumatol.* 2013;31(2):272-80.
12. van den Hoogen F, Khanna D, Fransen J, Johnson SR, Baron M, Tyndall A, et al. 2013 classification criteria for systemic sclerosis: an American college of rheumatology/European league against rheumatism collaborative initiative. *Ann Rheum Dis.* 2013;72(11):1747-55.
13. Chan EK, Damoiseaux J, Carballo OG, Conrad K, de Melo Cruvinel W, Francescantonio PL, et al. Report of the First International Consensus on Standardized Nomenclature of Antinuclear Antibody HEp-2 Cell Patterns 2014-2015. *Front Immunol.* 2015;6:412.
14. Lee KE, Kang JH, Lee JW, Wen L, Park DJ, Kim TJ, et al. Anti-centromere antibody-positive Sjogren's syndrome: A distinct clinical subgroup? *Int J Rheum Dis.* 2015;18(7):776-82.
15. Baer AN, Medrano L, McAdams-DeMarco M, Gniadek TJ. Association of Anticentromere Antibodies With More Severe Exocrine Glandular Dysfunction in Sjogren's Syndrome: Analysis of the Sjogren's International Collaborative Clinical Alliance Cohort. *Arthritis Care Res (Hoboken).* 2016;68(10):1554-9.
16. Perosa F, Prete M, Di Lernia G, Ostuni C, Favoino E, Valentini G. Anti-centromere protein A antibodies in systemic sclerosis: Significance and origin. *Autoimmun Rev.* 2016;15(1):102-9.
17. Damoiseaux J, Andrade LEC, Carballo OG, Conrad K, Francescantonio PLC, Fritzler MJ, et al. Clinical relevance of HEp-2 indirect immunofluorescent patterns: the International Consensus on ANA patterns (ICAP) perspective. *Ann Rheum Dis.* 2019;78(7):879-89.